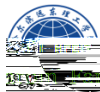


2021

2021 12



哈尔滨理工大学

Harbin Institute of Technology

.....	1
.....	1
.....	4
.....	8
.....	11
.....	11
.....	12
.....	13
.....	13
.....	17
.....	18
.....	20
.....	20
.....	20

.....	21
.....	22
.....	24
.....	24
.....	26
.....	28
.....	30
.....	31

2021

2206

2201

5

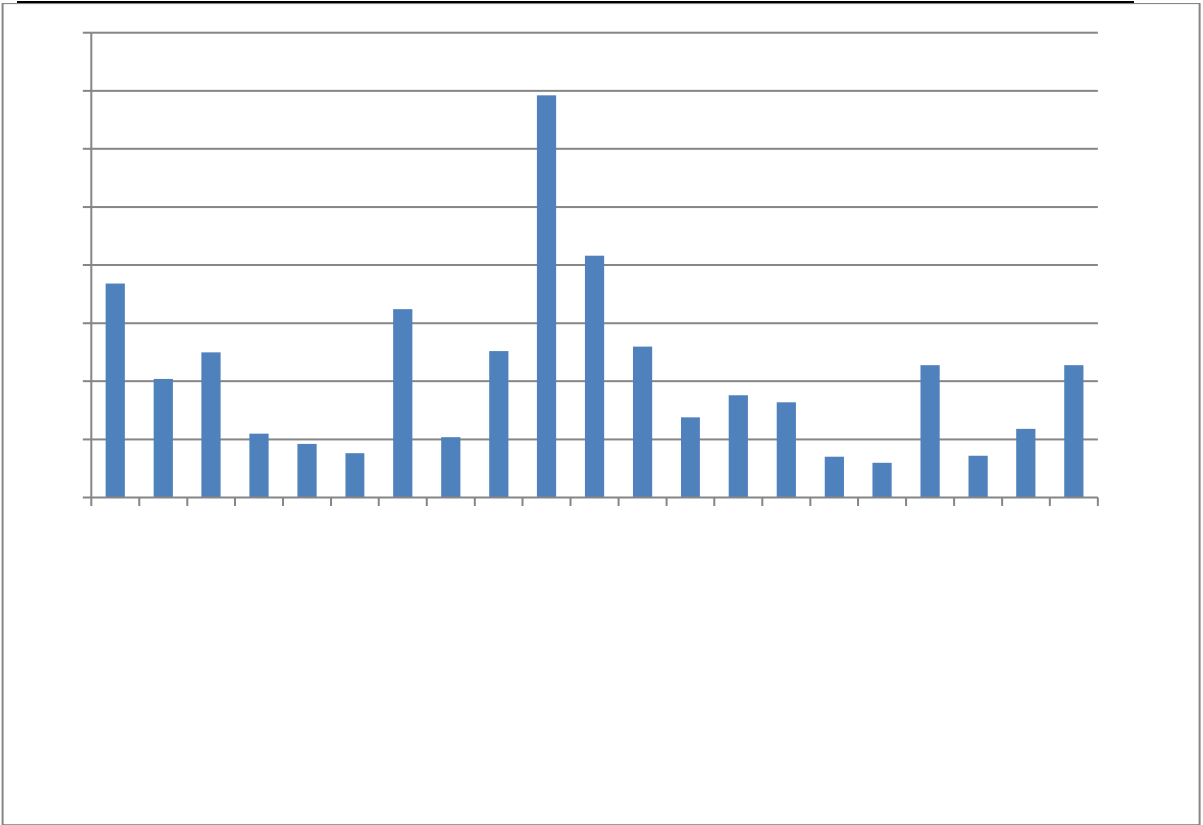
2021

6

21

学院	专业	总人数	学院	专业	总人数
		184			346
		102			208
		125			130
		55			69
		46			753
		512			35
		88			30
		82			65
		170			114
		38			36
		162			59
		52			114
		126			323
		378			2201

1-1

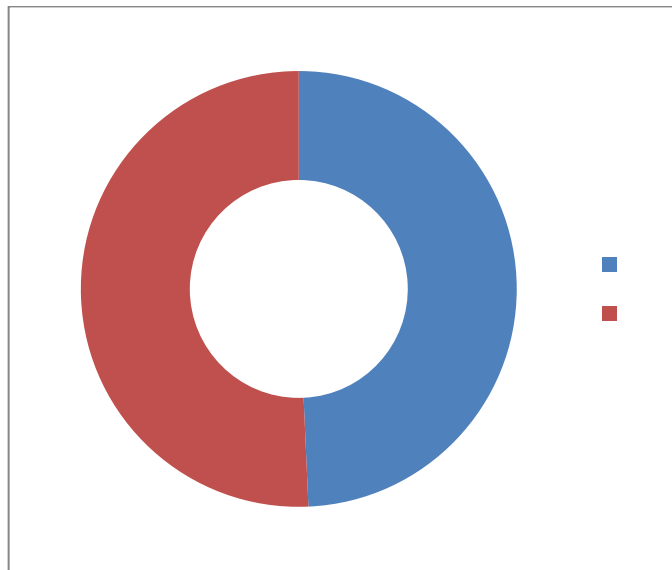


1-1

2021

1085

1116



1-2

1-3

2021

2201

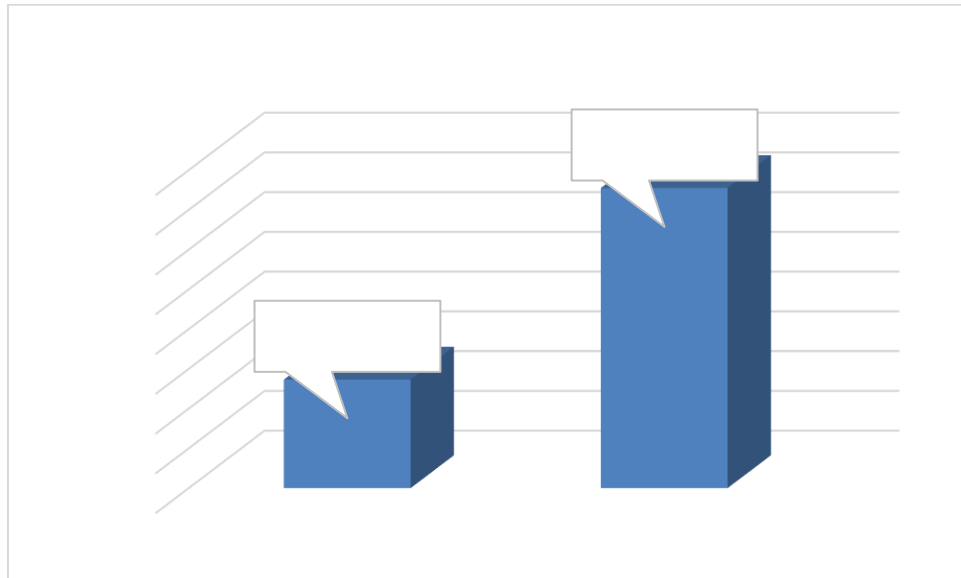
2021

8 31

82.73%

11 30

87.55%



1-3 2021

2021

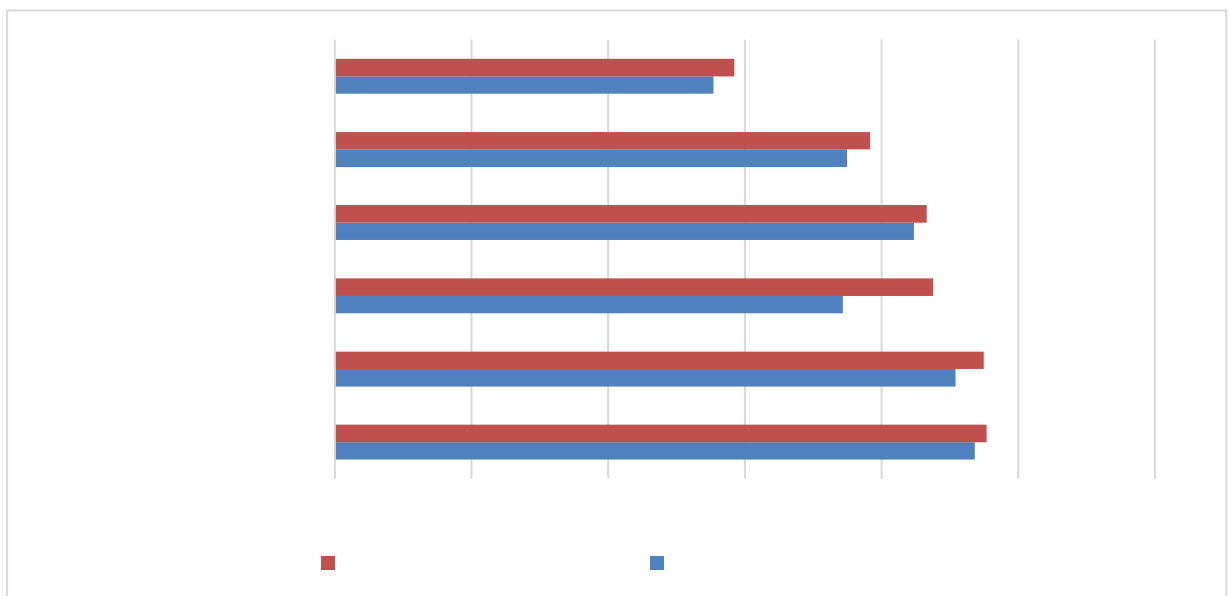
6

95.38% 94.93%

58.46%

学院	总人数 (含专科)	初次就业去向落实率 (8月31日)	年终就业去向落实率 (11月30日)

1-4



1-4

2021

21

2021 11 30 2021 274

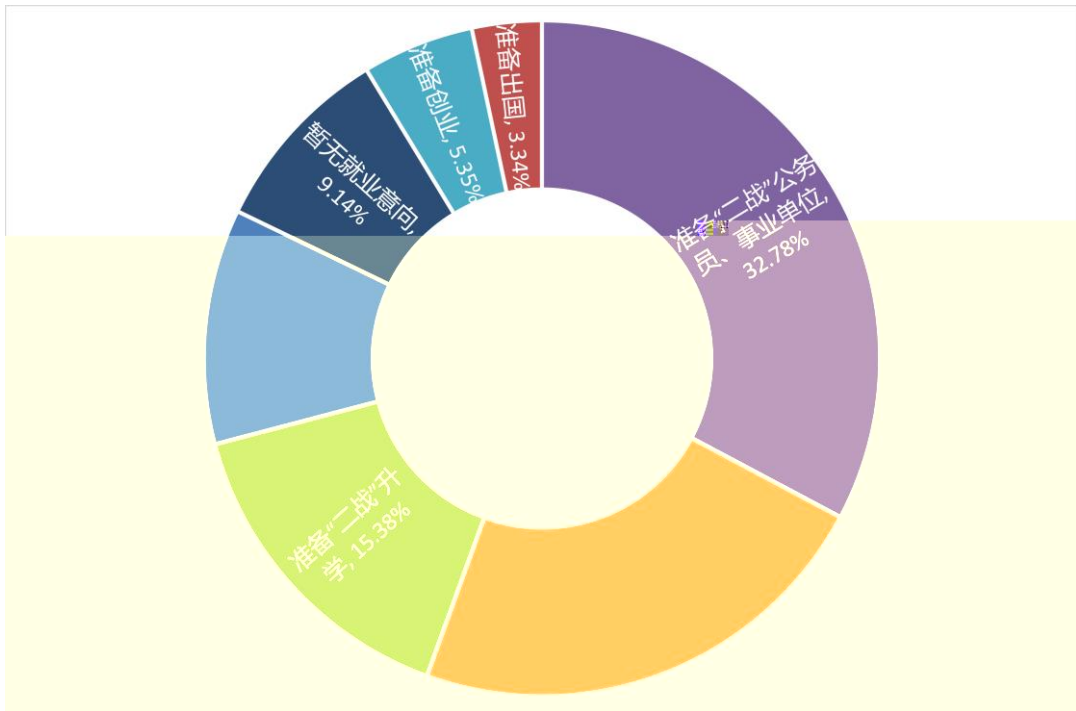
32.78%

22.76%

15.38% 11.26%

5.53% 3.34%

9.14%



1-5 2021

2021

84.58%

6.15%

1-6 2021



哈尔滨工业大学

Harbin Institute of Technology

2021

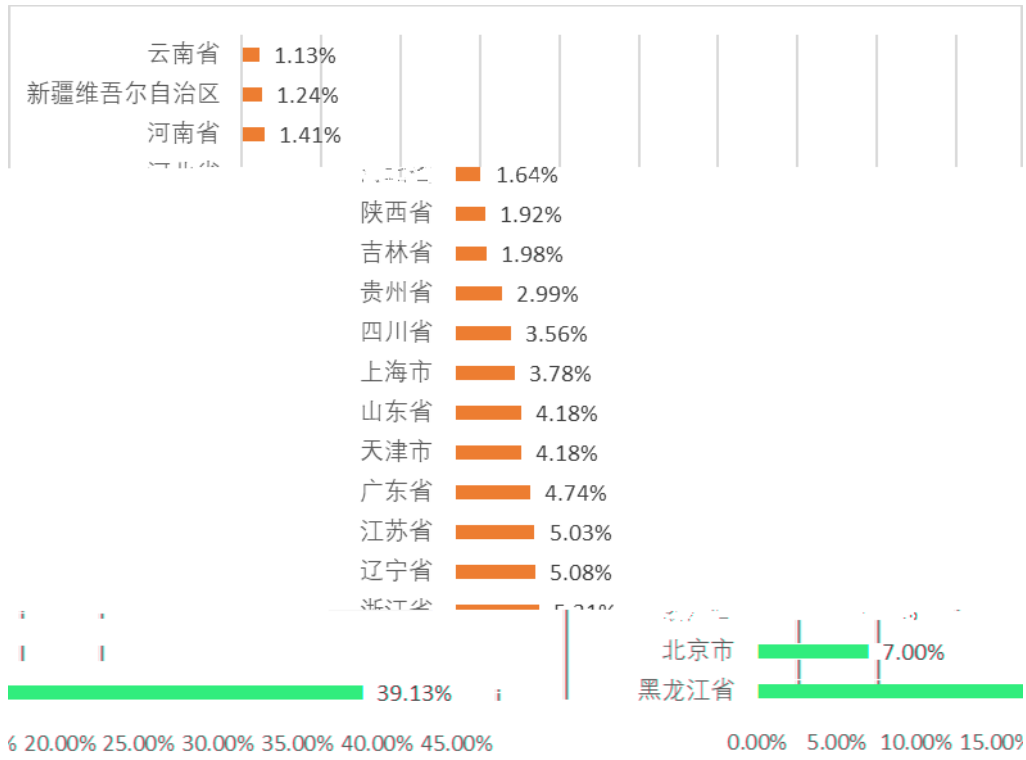
31

2021

2021

39.13%

2021

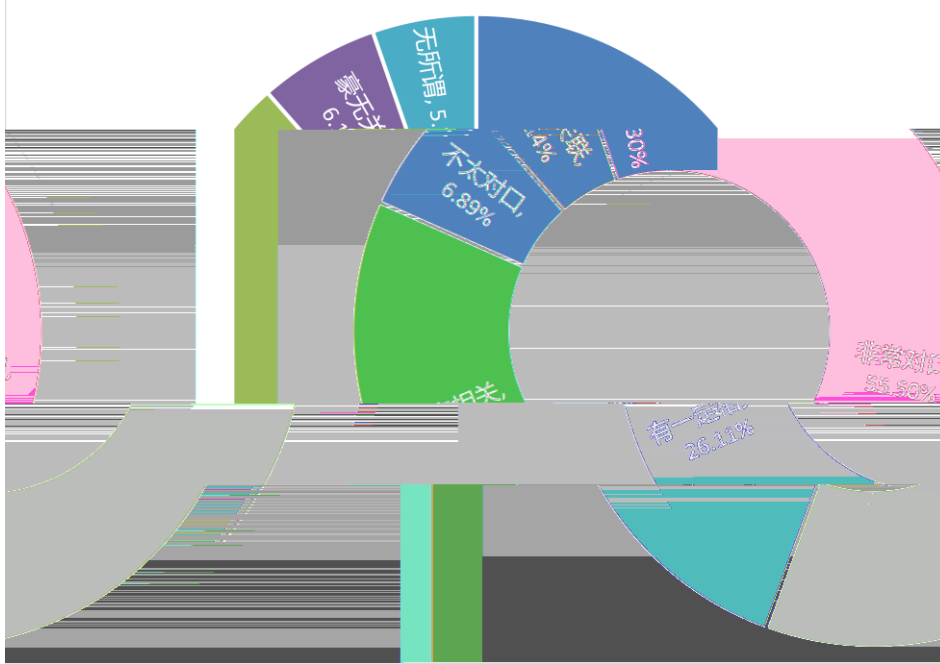


1-8 2021

6

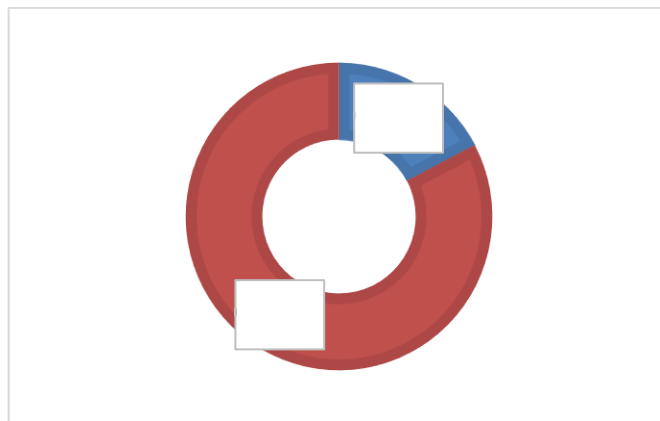
28

	2021	55.5%	
	26.11%		
6.14%			5.30%

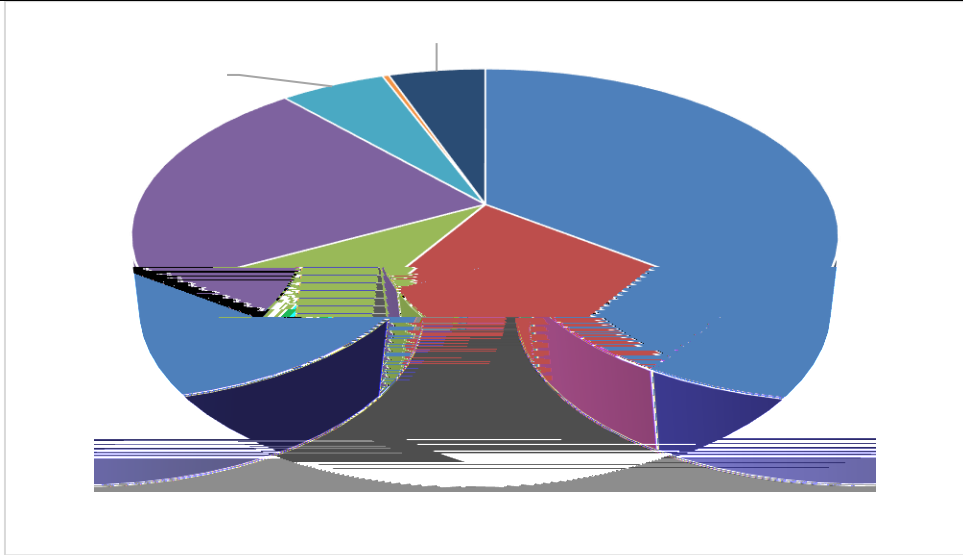


2-1 2021

82.71% 2021 17.29%



2-2 2021



2-3 2021

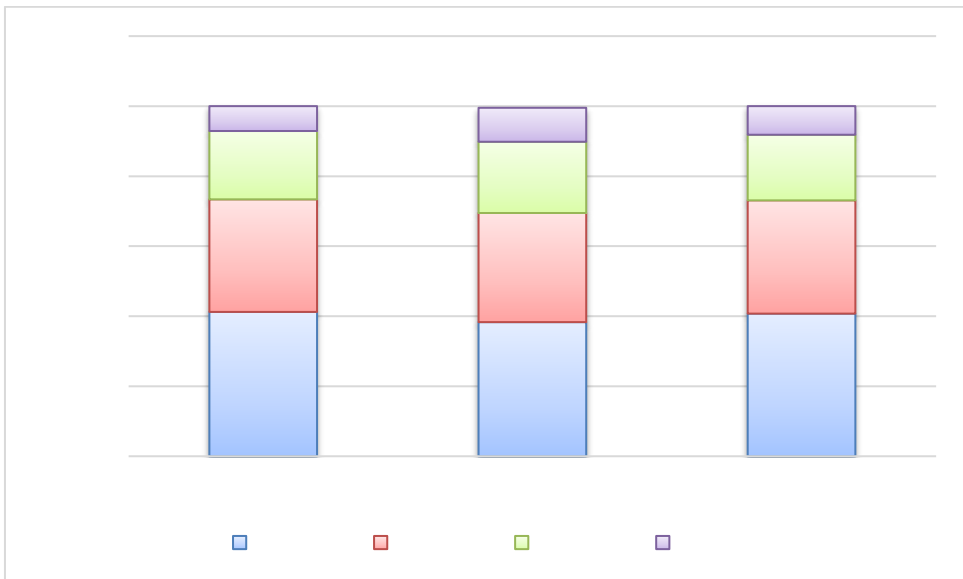
2021

2021

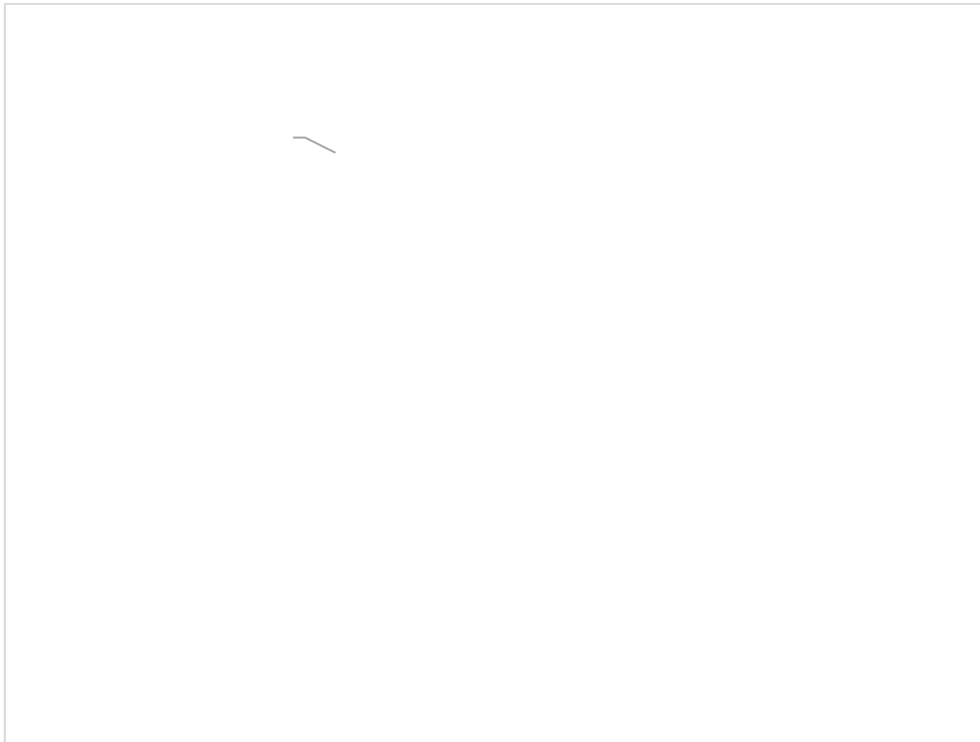
92.9%

91.83%

89.83%



2-4 2021

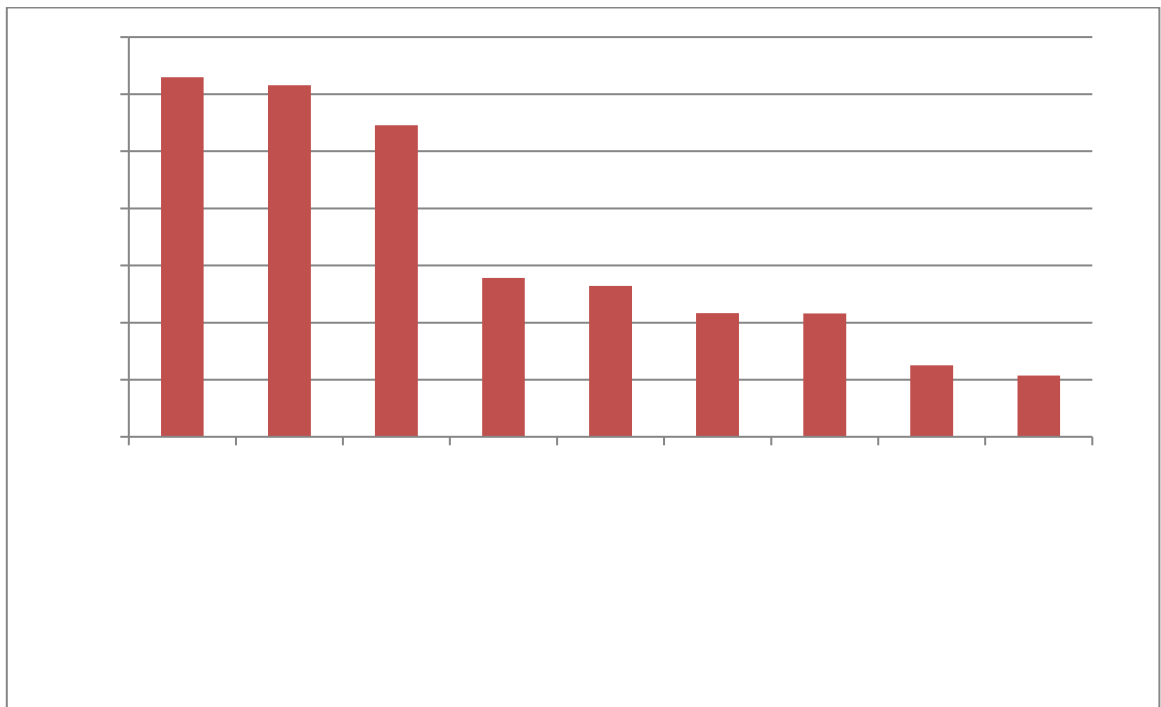


2-5

2021

62.98% 61.59%

54.66%



2-6

2021

42.12%

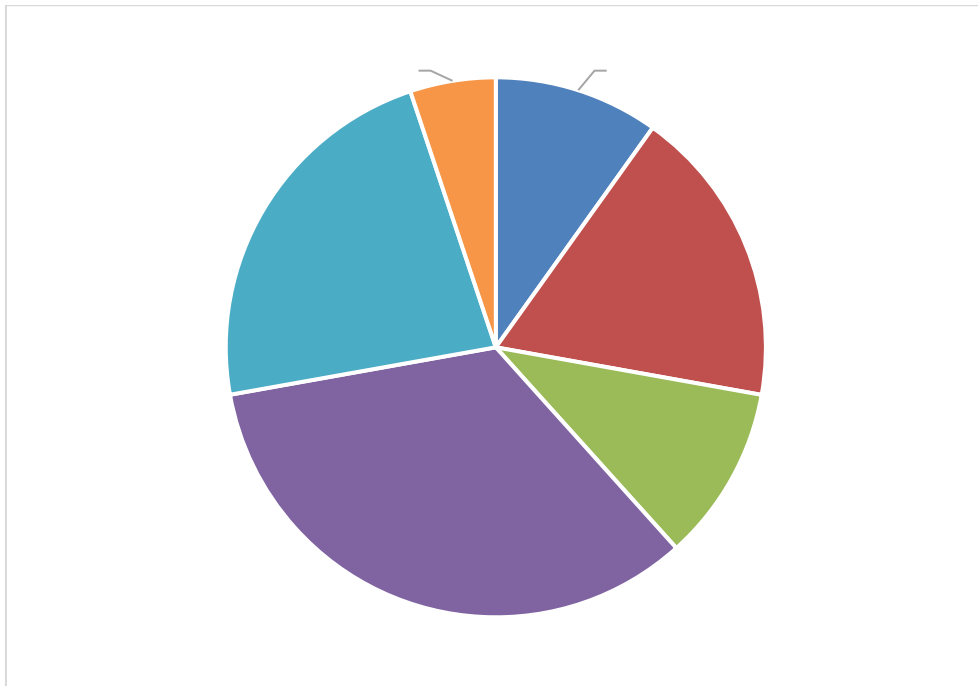
28.23%

22.33%

15.6%

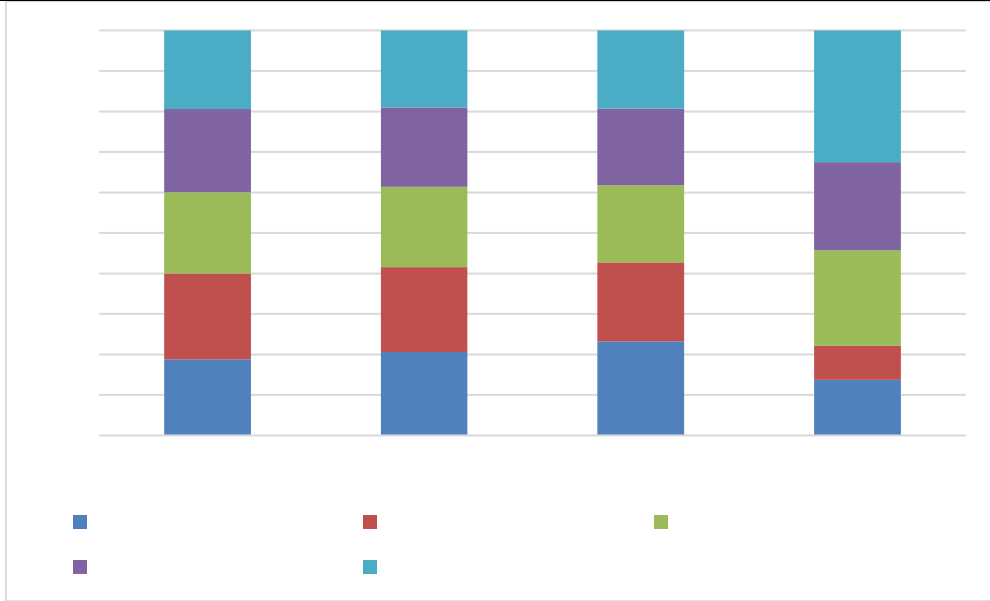
12.29%

6.38%

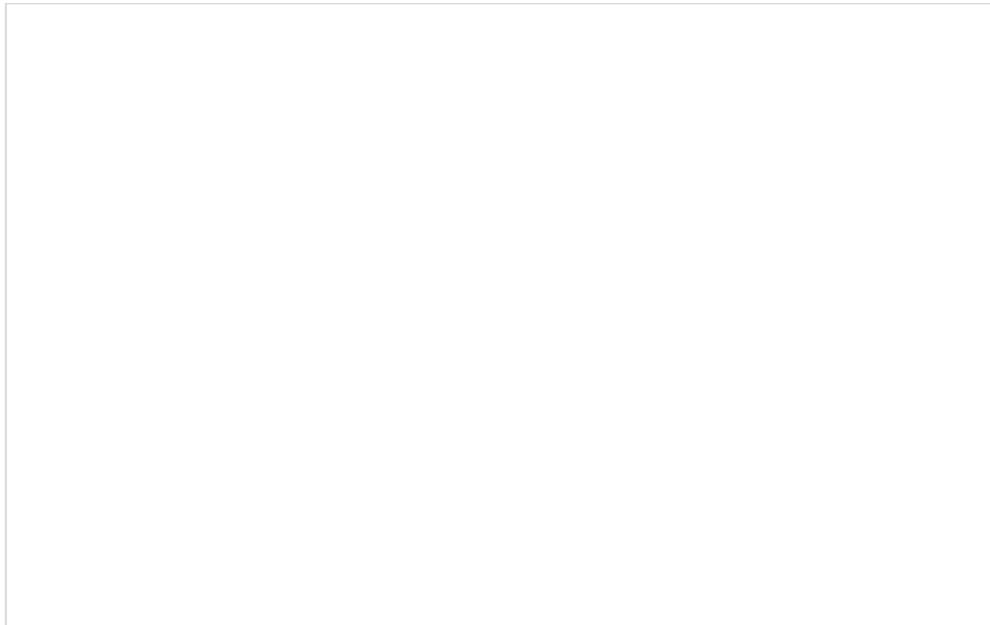


2-7

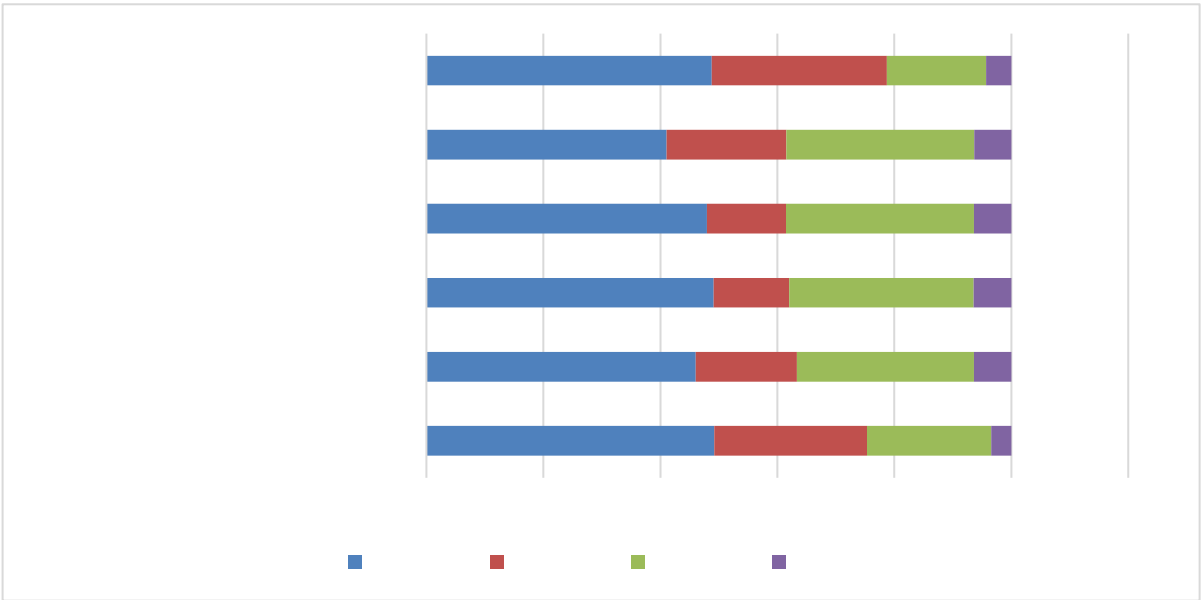
90%



2-8

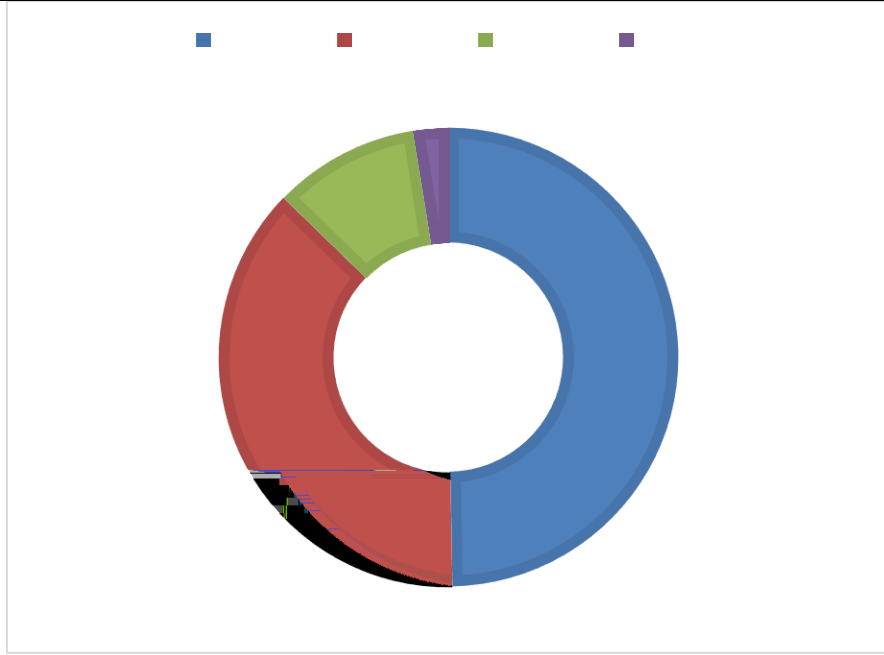


2-9



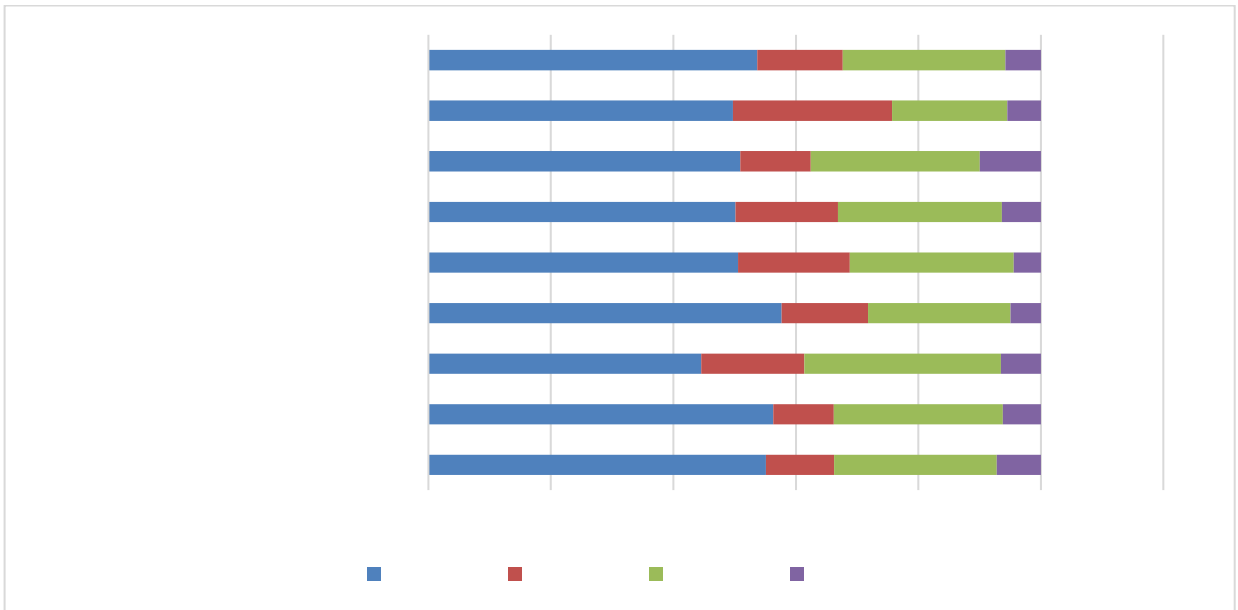
2-10

97.53%



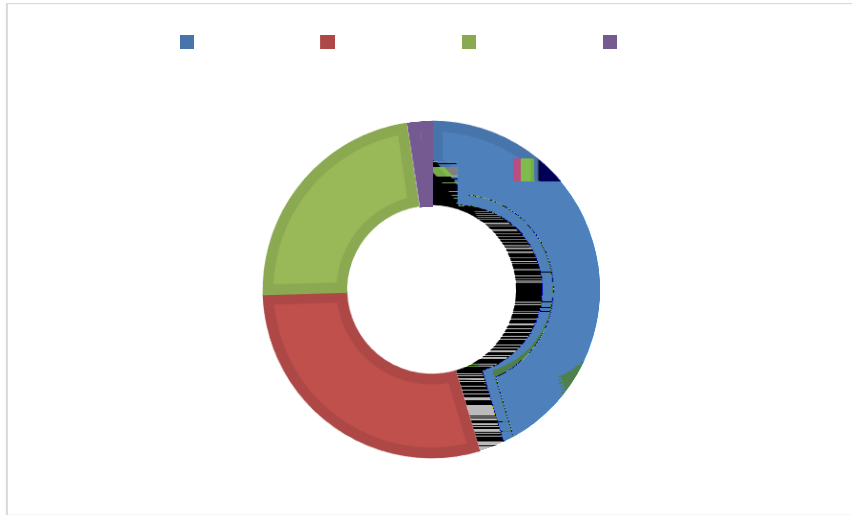
2-11

2021

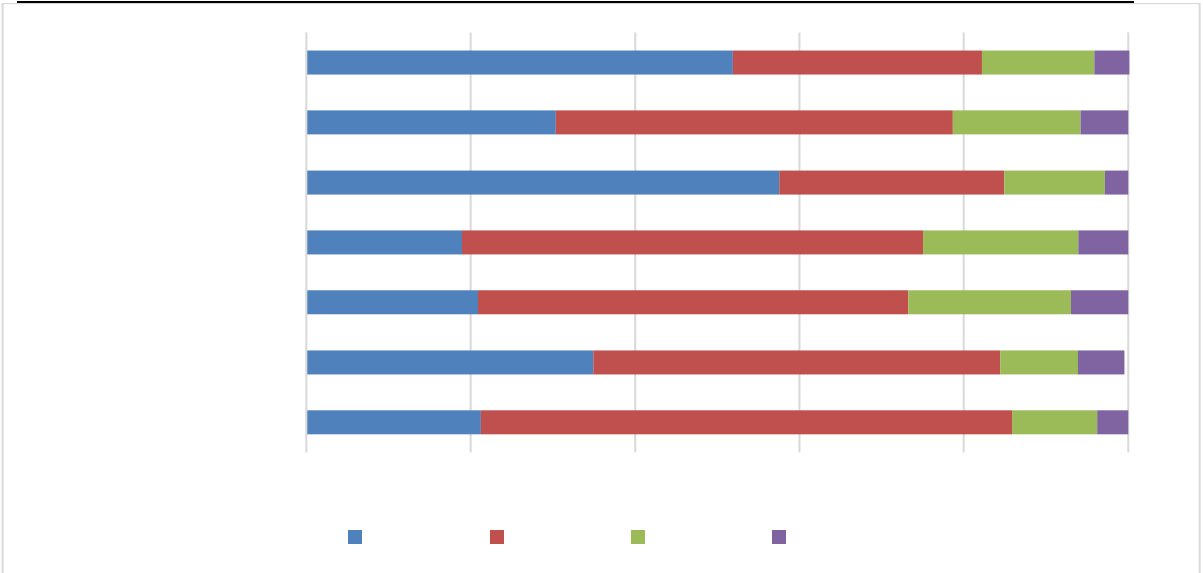


2-12

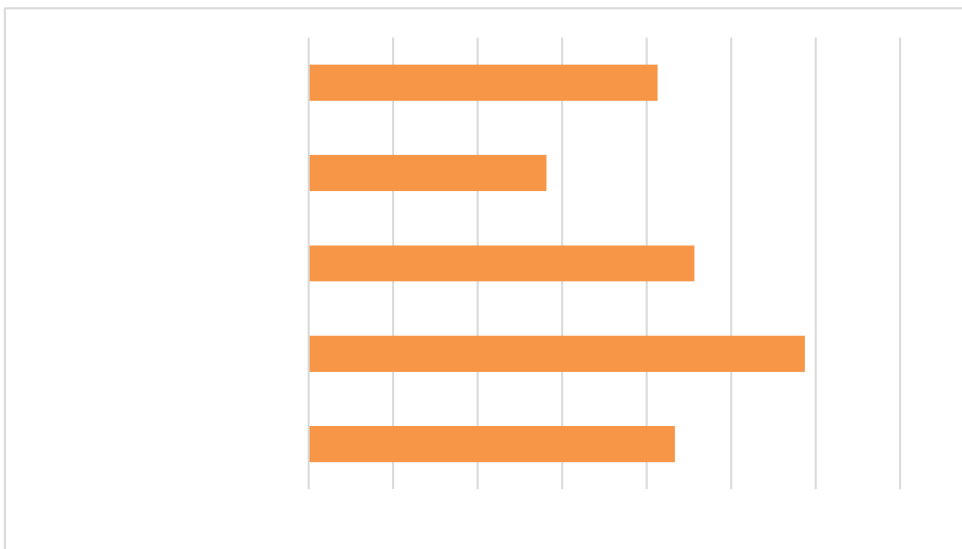
97.69%



3-1

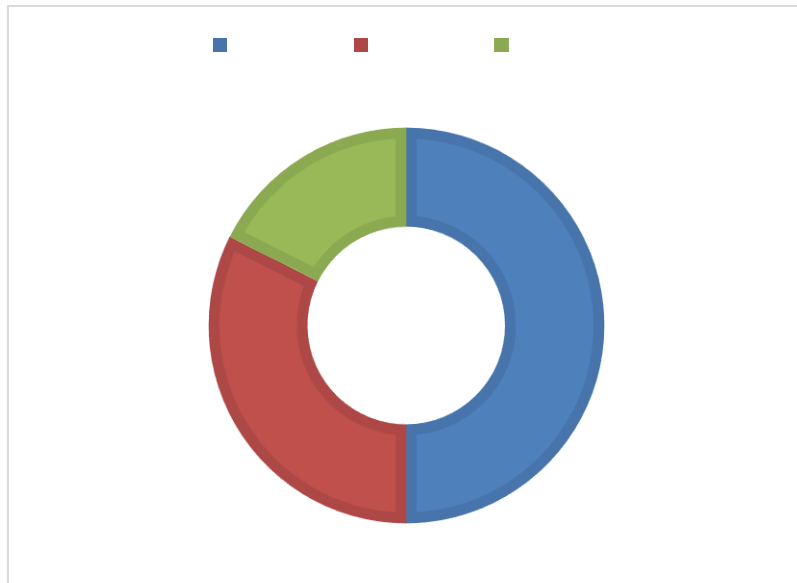


3-2



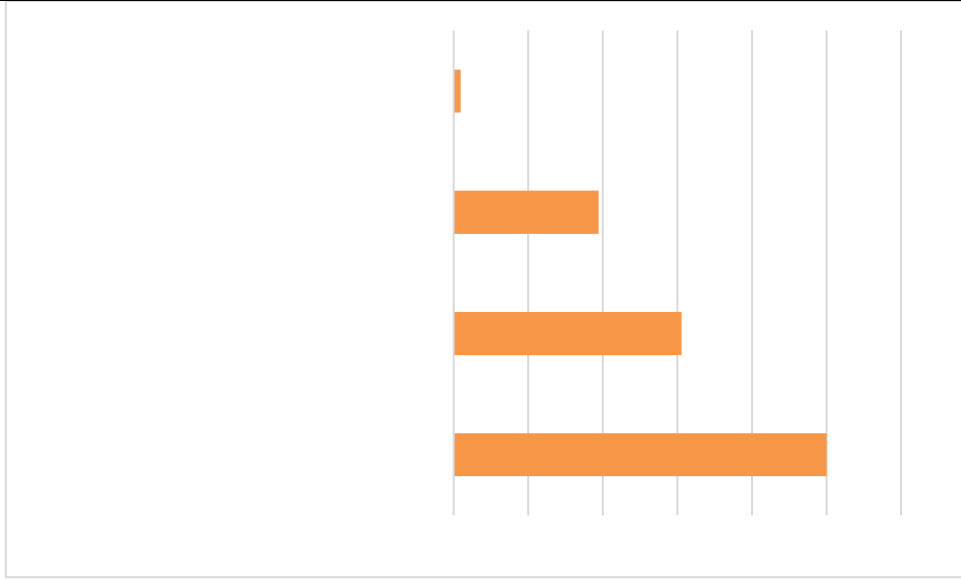
3-3

24365



3-4

50%



3-5

2021

8 31

82.73%

3

2021

5

7

--

2021

15 00

30 15 00

9

QQ

QQ

20

2020

9 2021 8 31 1864
75036 34 1

2021

2021

2021

34

12

2021 469

1000

1.1

11 30

2021

- -

2021 + 288
1028 7 2
47 3 44
2021